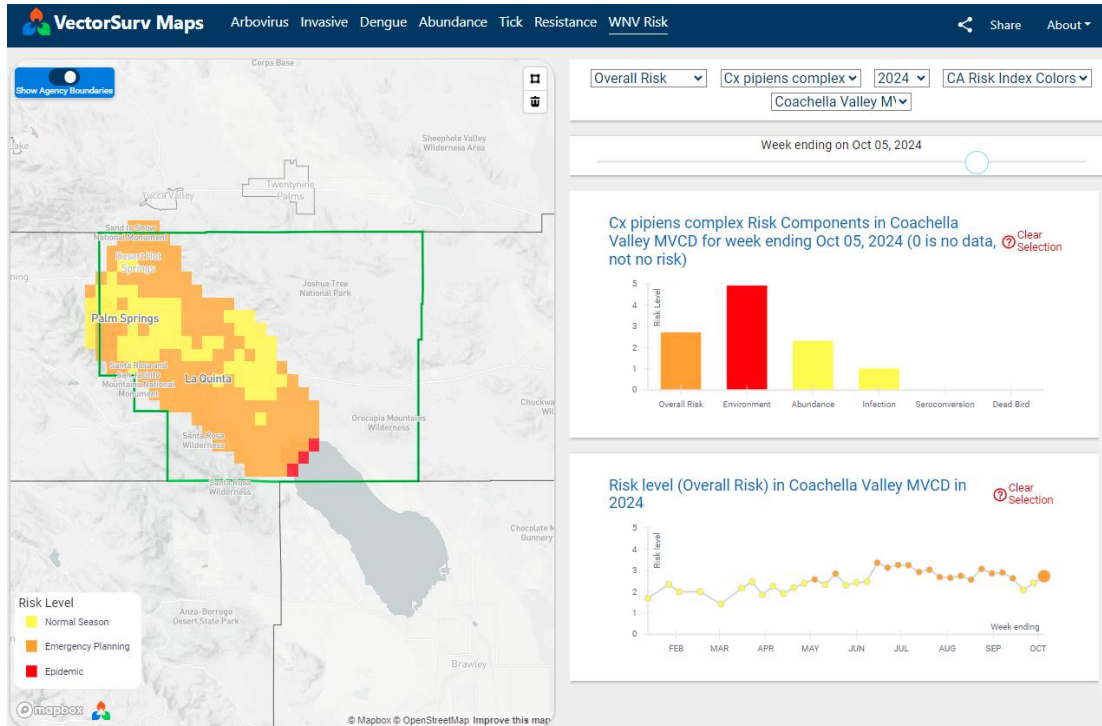
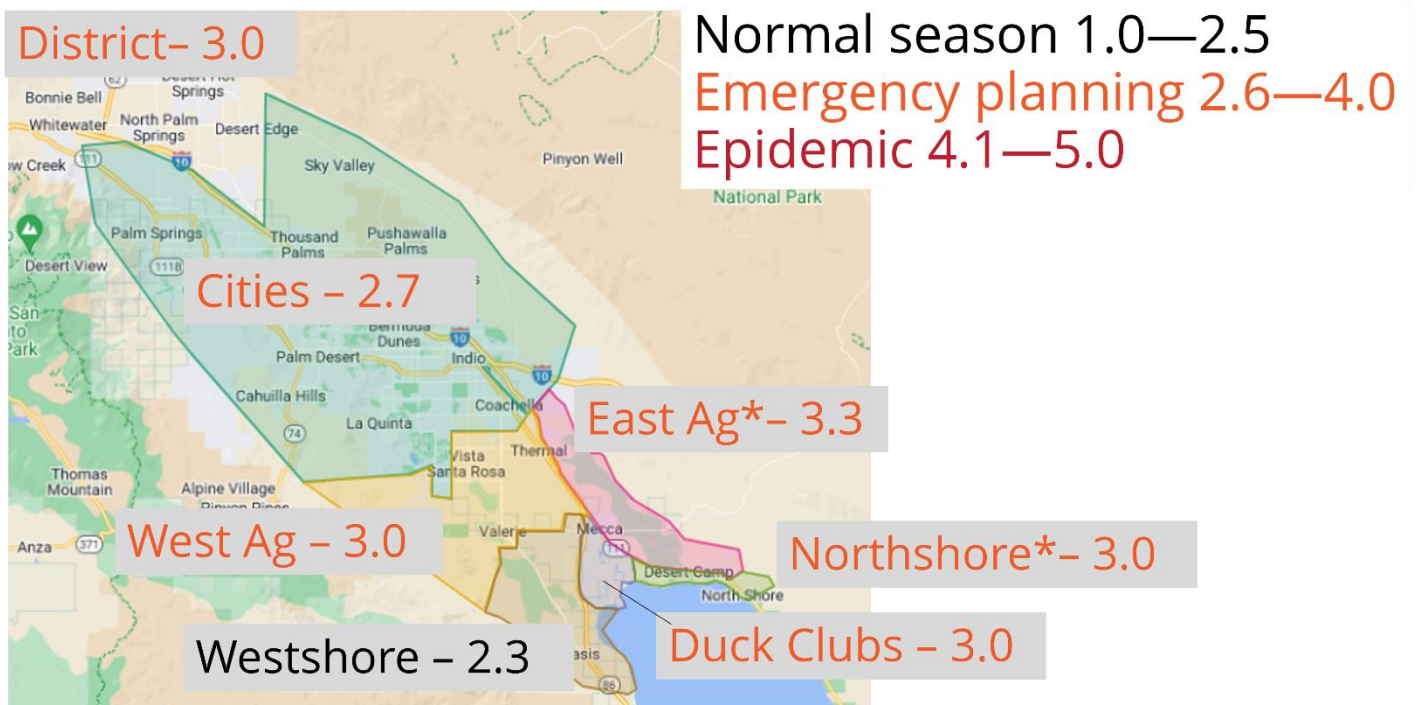


West Nile Virus Risk Assessment



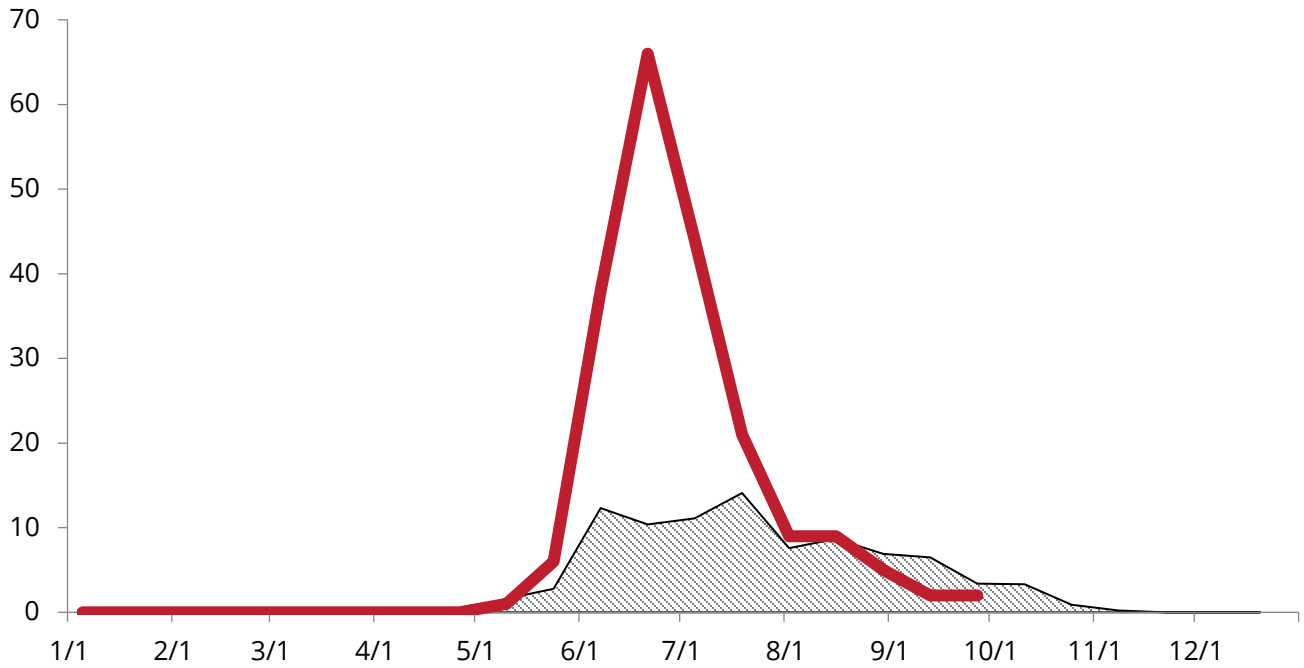
St. Louis Encephalitis Virus Risk Assessment



Risk Assessments courtesy of VectorSurv.org. Mosquito abundance, environmental factors (temperature and rainfall), number of infected mosquito samples, number of dead birds, and number of human cases are scored and averaged by region.

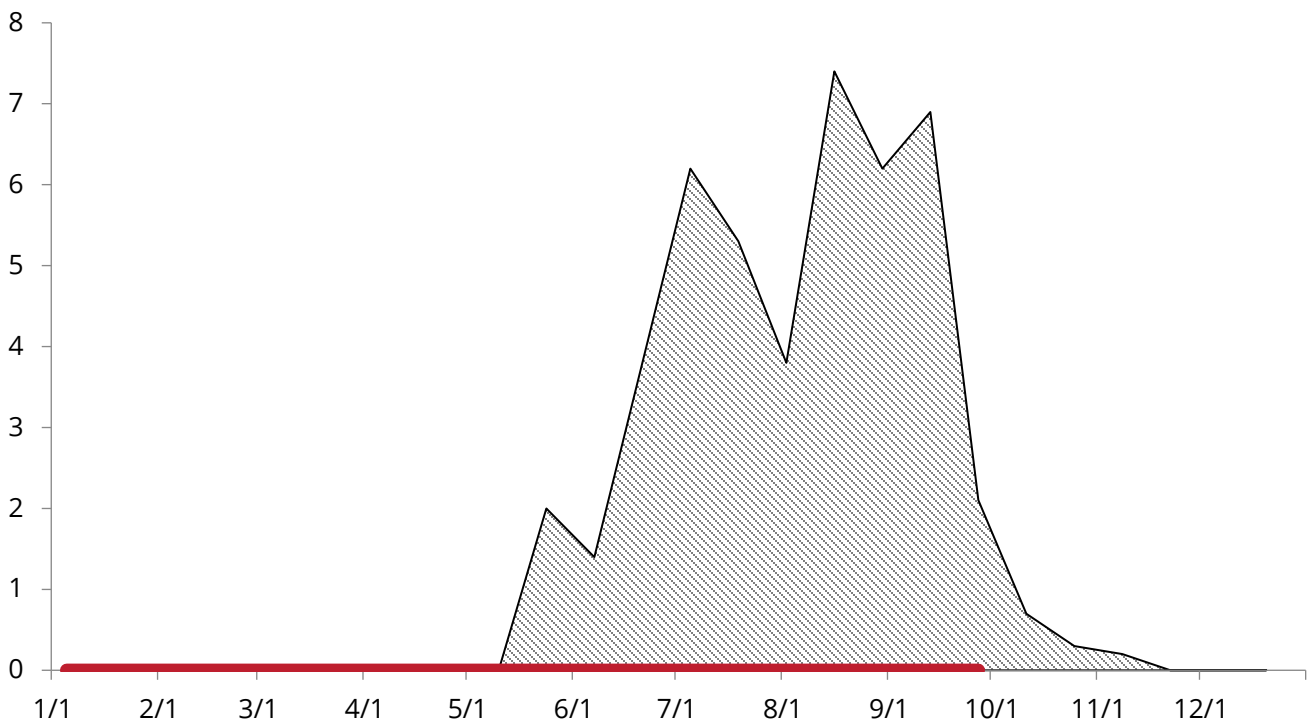
West Nile virus mosquito samples

5-year average 2024

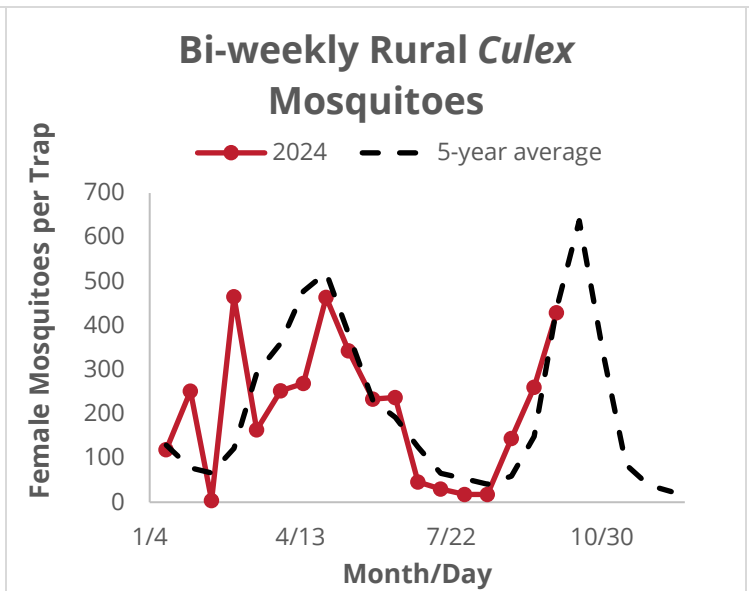
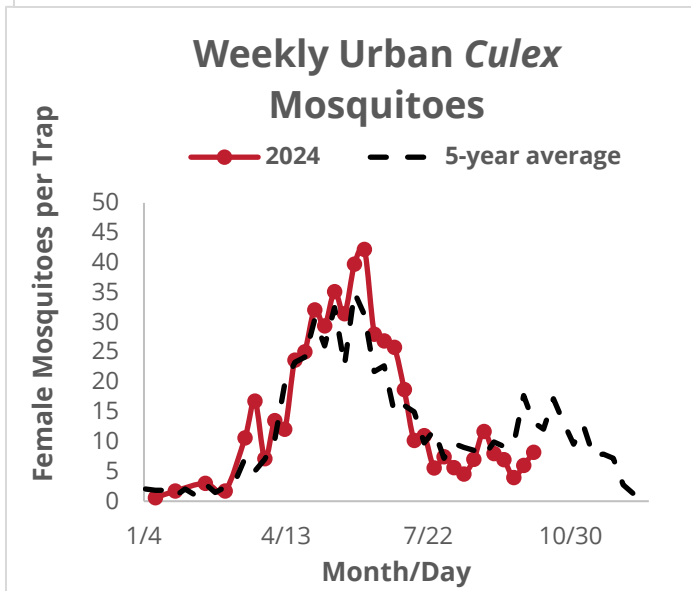
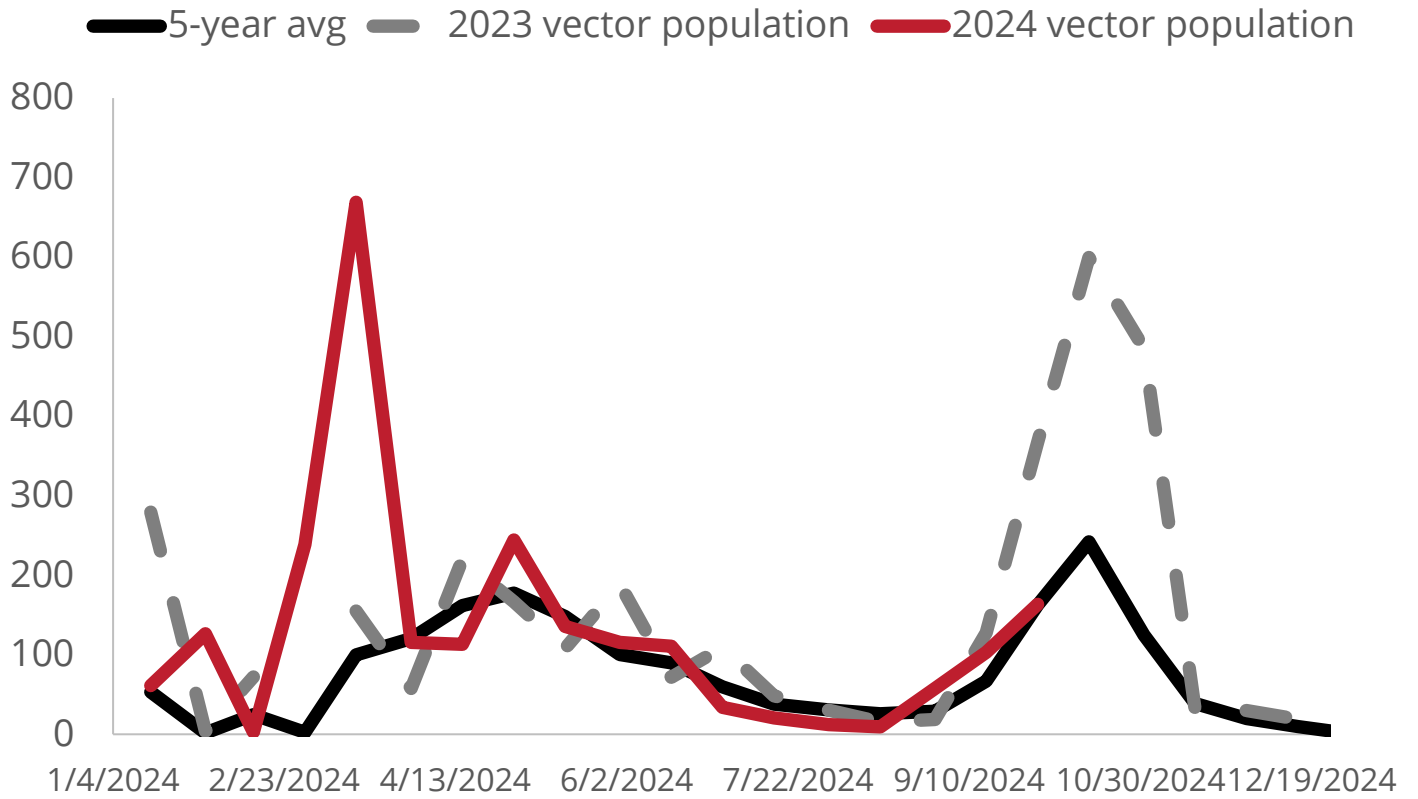


St. Louis Encephalitis virus samples

5-year average 2024

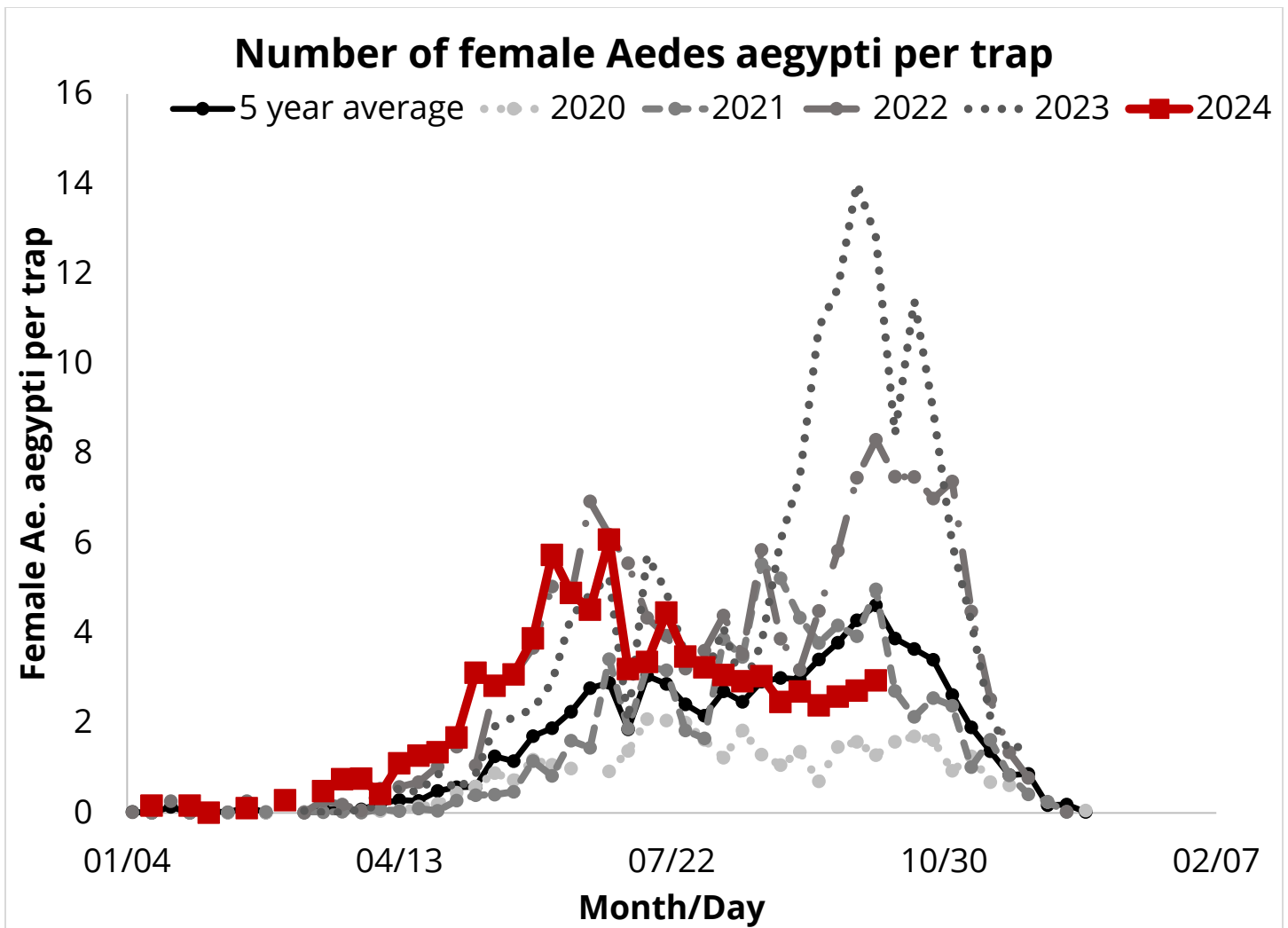


Culex mosquitoes 2024



Abundance of CO₂ and gravid traps for female *Culex* mosquitoes (vectors of WNV and SLEV). District-wide numbers are about the 5-year average for the second half of September (163 mosquitoes per trap). Rural mosquito traps are about the 5-year average for the second half of September (429 mosquitoes per trap). Urban traps this week are about one-half what the 5-year average (8 mosquitoes per trap; excludes Bubbling Wells).

*District-wide and rural are on 1/2 month; Urban are weekly comparisons



Five-year average includes 2019-2023. 2019 and 2020 included increased detections including new cities and communities.

This week's average was approximately 3 mosquitoes per trap; last year's was approximately 13 mosquitoes per trap.