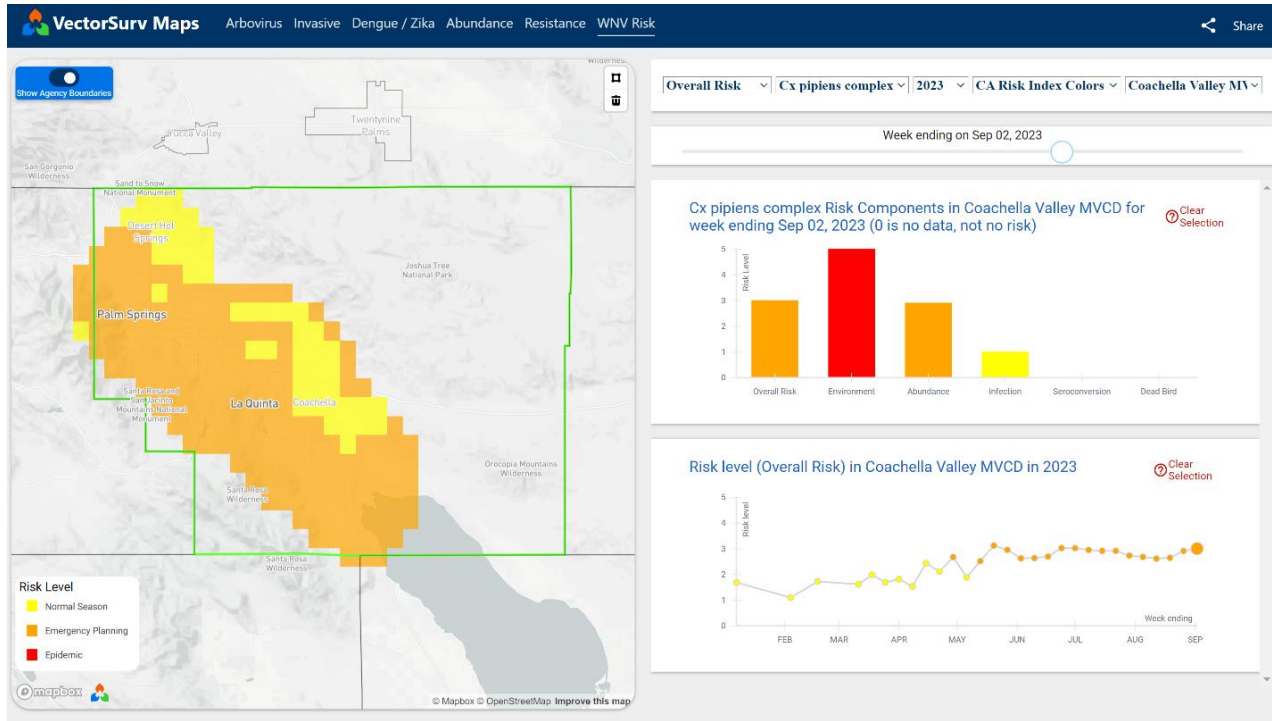
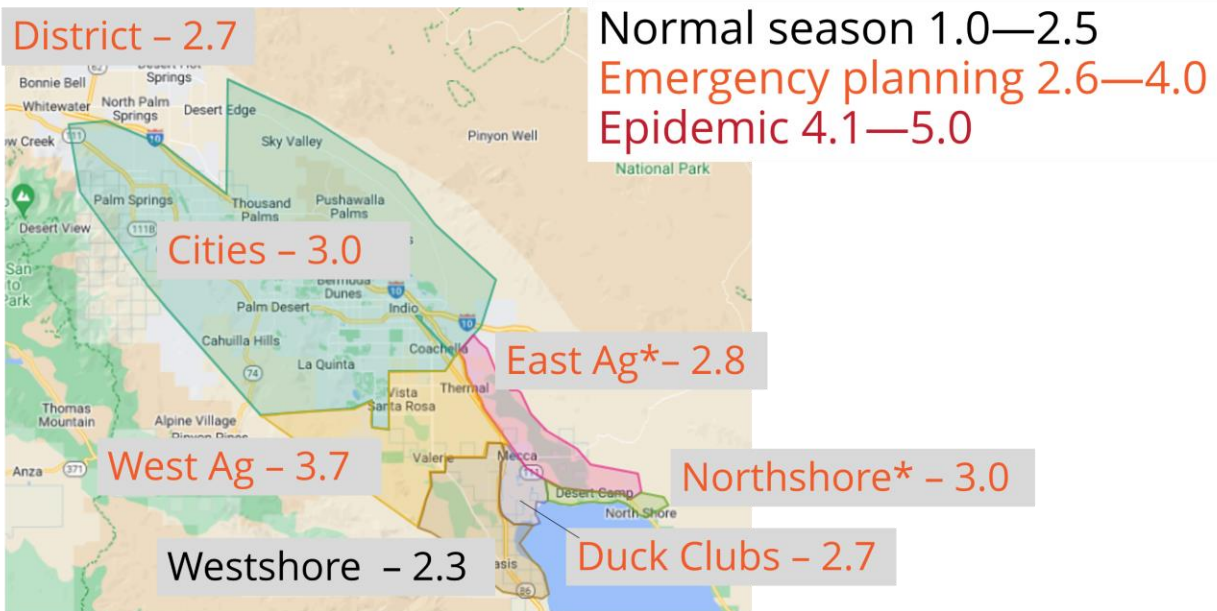


5 September 2023

# West Nile Virus Risk Assessment



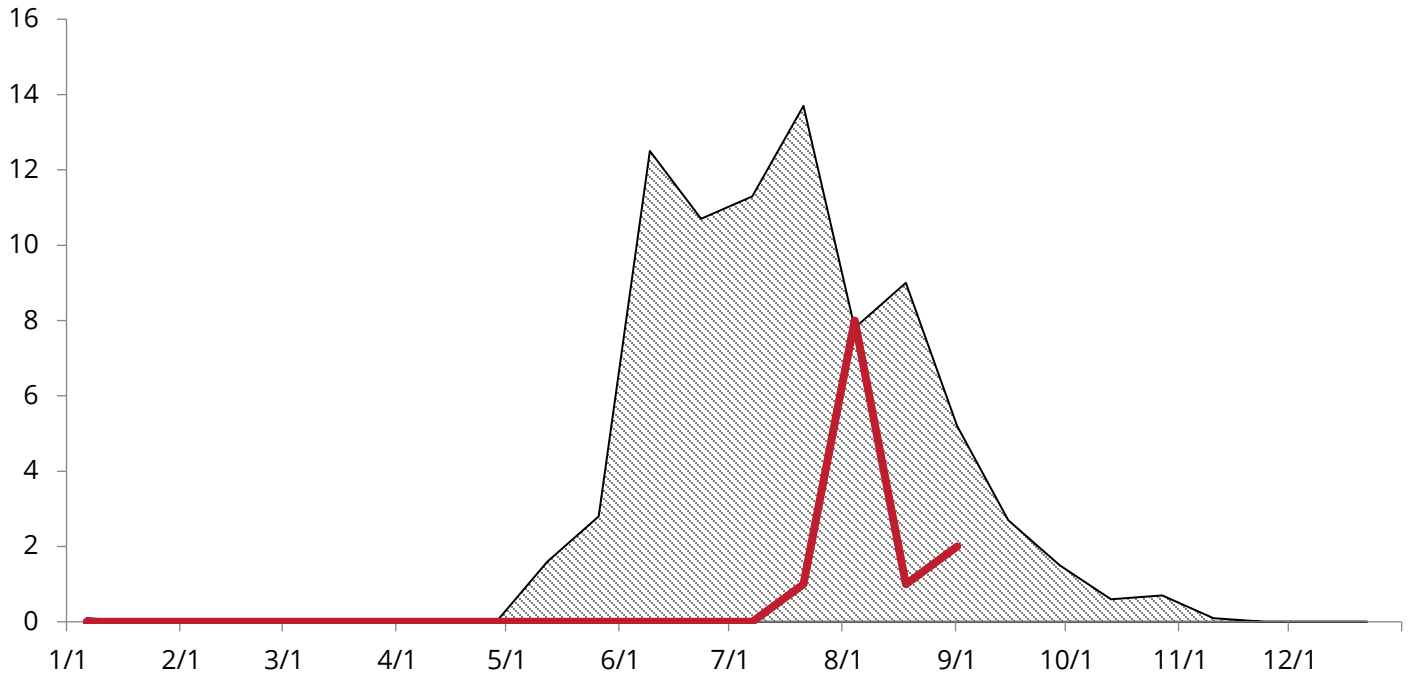
## St. Louis Encephalitis Virus Risk Assessment



Risk Assessments courtesy of VectorSurf.org. Mosquito abundance, environmental factors (temperature and rainfall), number of infected mosquito samples, number of dead birds, and number of human cases are scored and averaged by region.

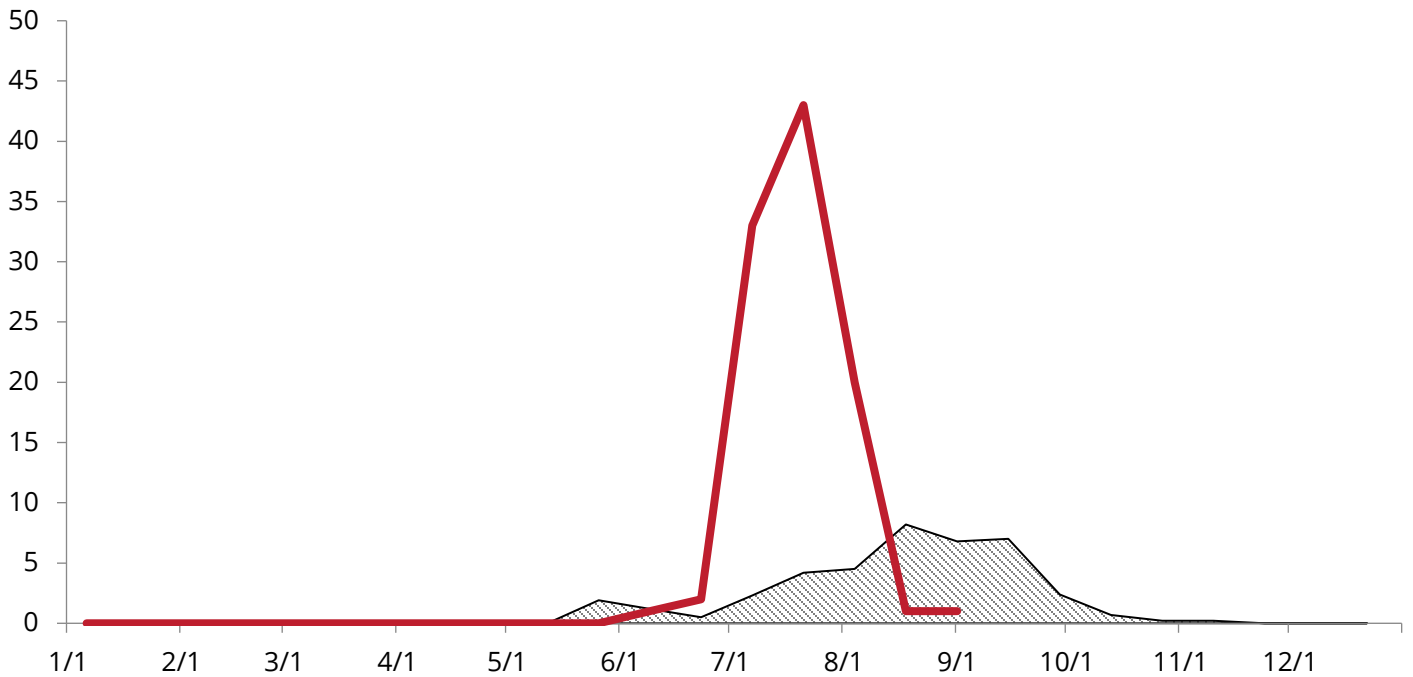
## West Nile virus mosquito samples

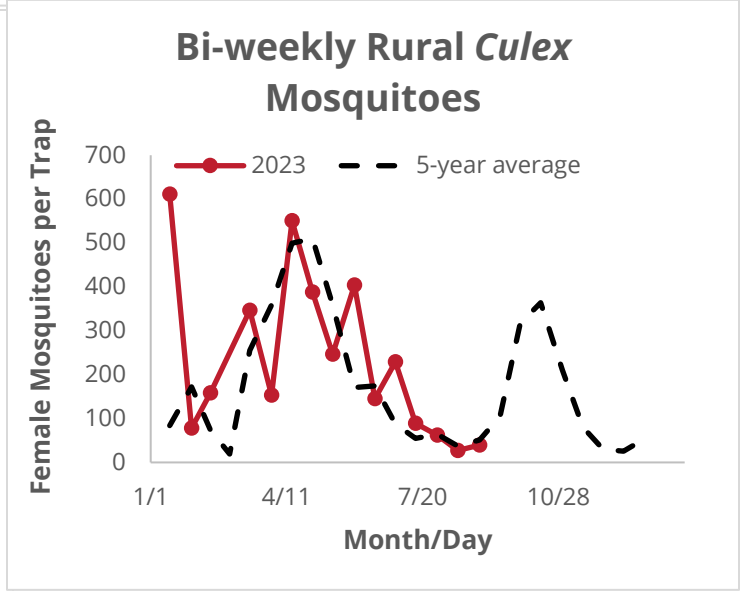
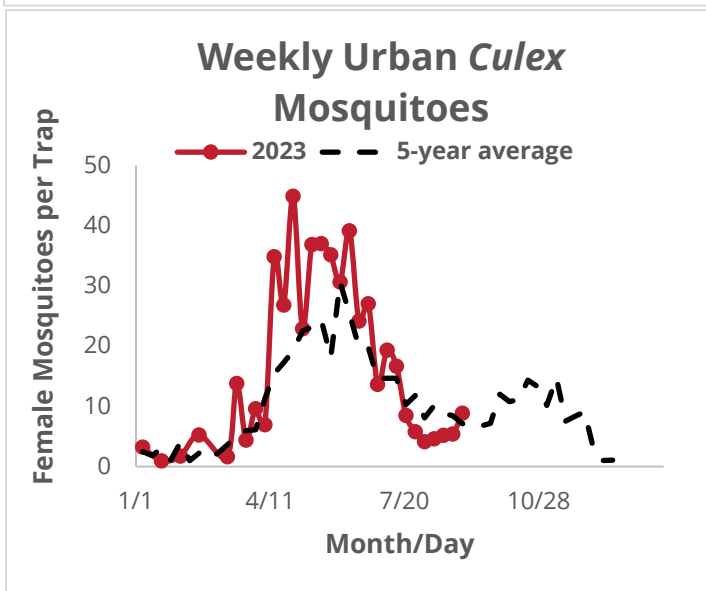
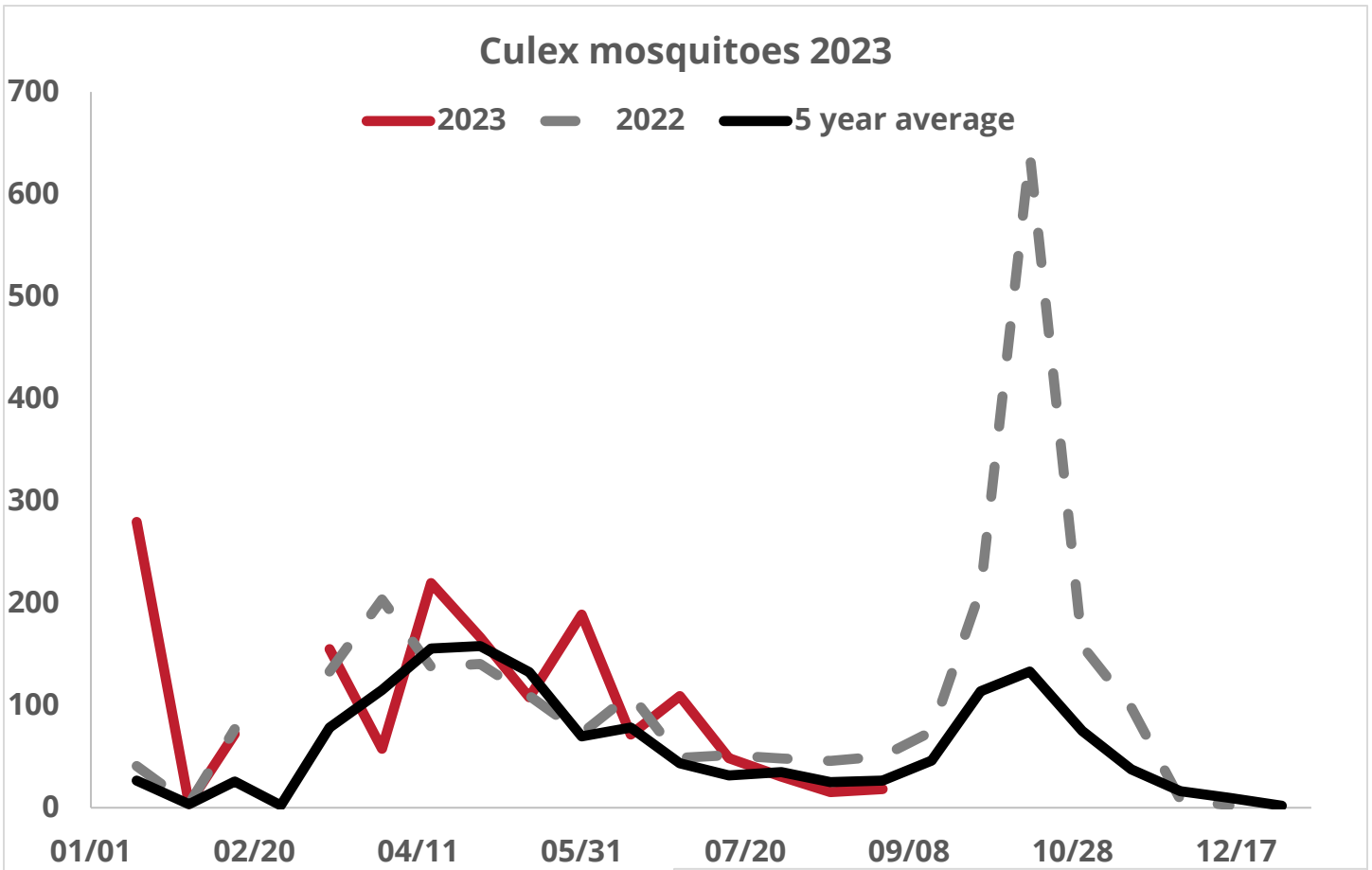
5-year average 2023



## St. Louis Encephalitis virus samples

5-year average 2023

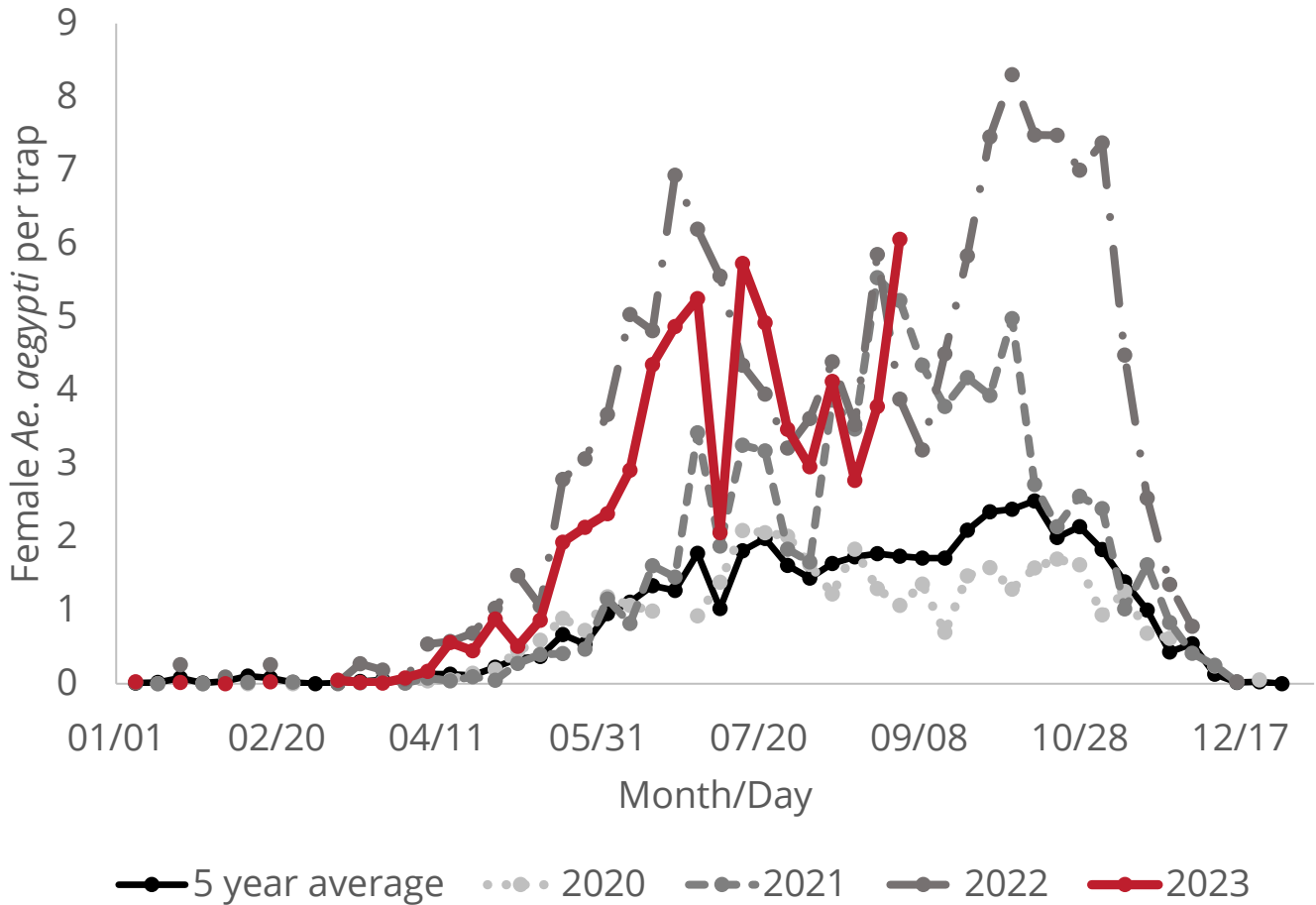




Abundance of CO<sub>2</sub> and gravid traps for female *Culex* mosquitoes (vectors of WNV and SLEV). District-wide numbers are lower than the 5-year average for the second half of August (18 mosquitoes per trap). Rural mosquito traps were lower than the 5-year average for the second half of August (40 mosquitoes per trap). Urban traps this week are higher than the 5-year average (9 mosquitoes per trap; excludes Bubbling Wells).

\*District-wide and rural are on 1/2 month; Urban are weekly comparisons

## Number of female *Aedes aegypti* per trap



Five-year average includes 2018-2022. This includes years when mosquito detections were lower (2018). 2019 and 2020 included increased detections including new cities and communities.

This week's average was approximately 6 mosquitoes per trap; last year's was approximately 4 mosquitoes per trap.