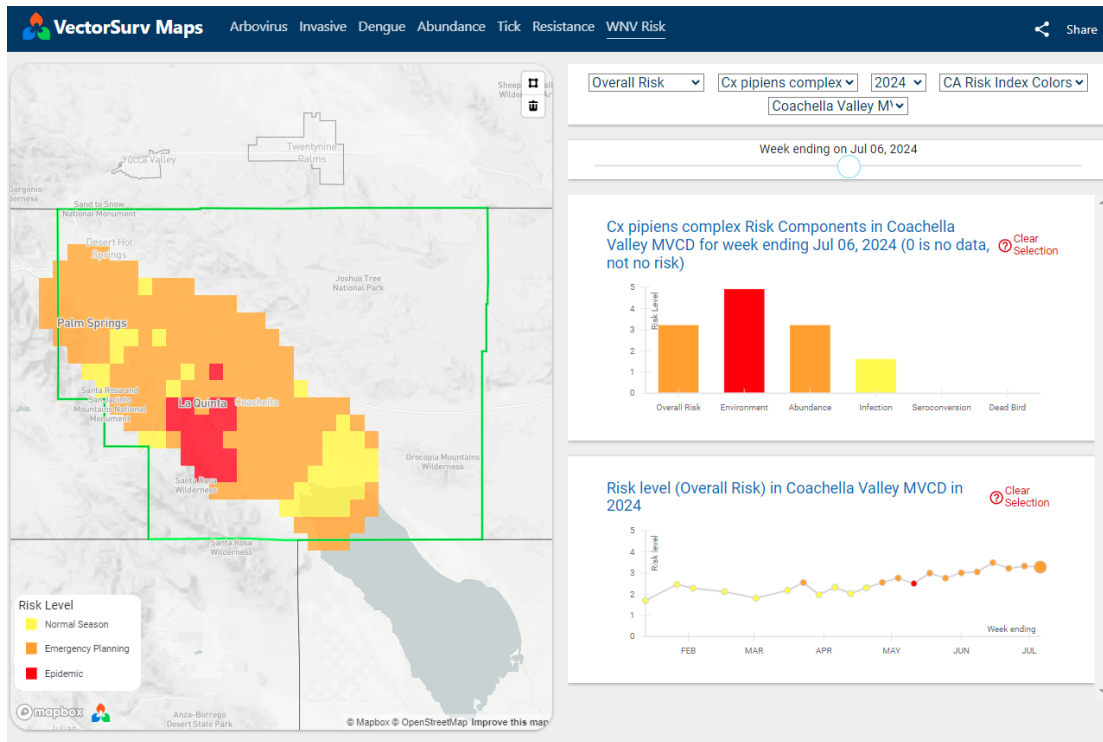
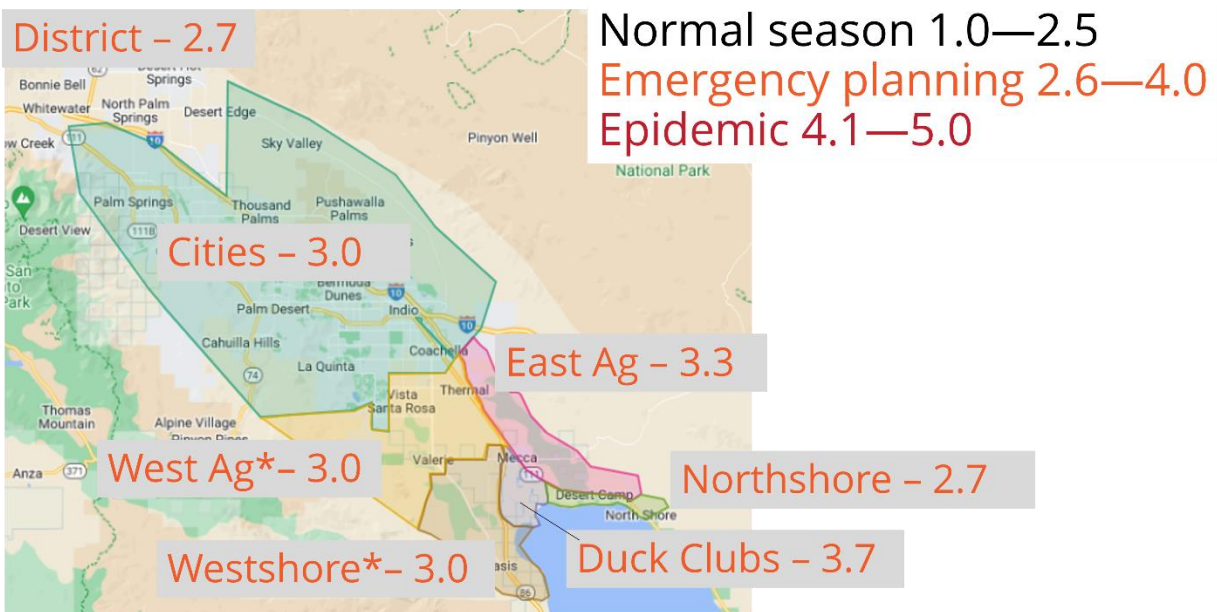


8 July 2024

West Nile Virus Risk Assessment

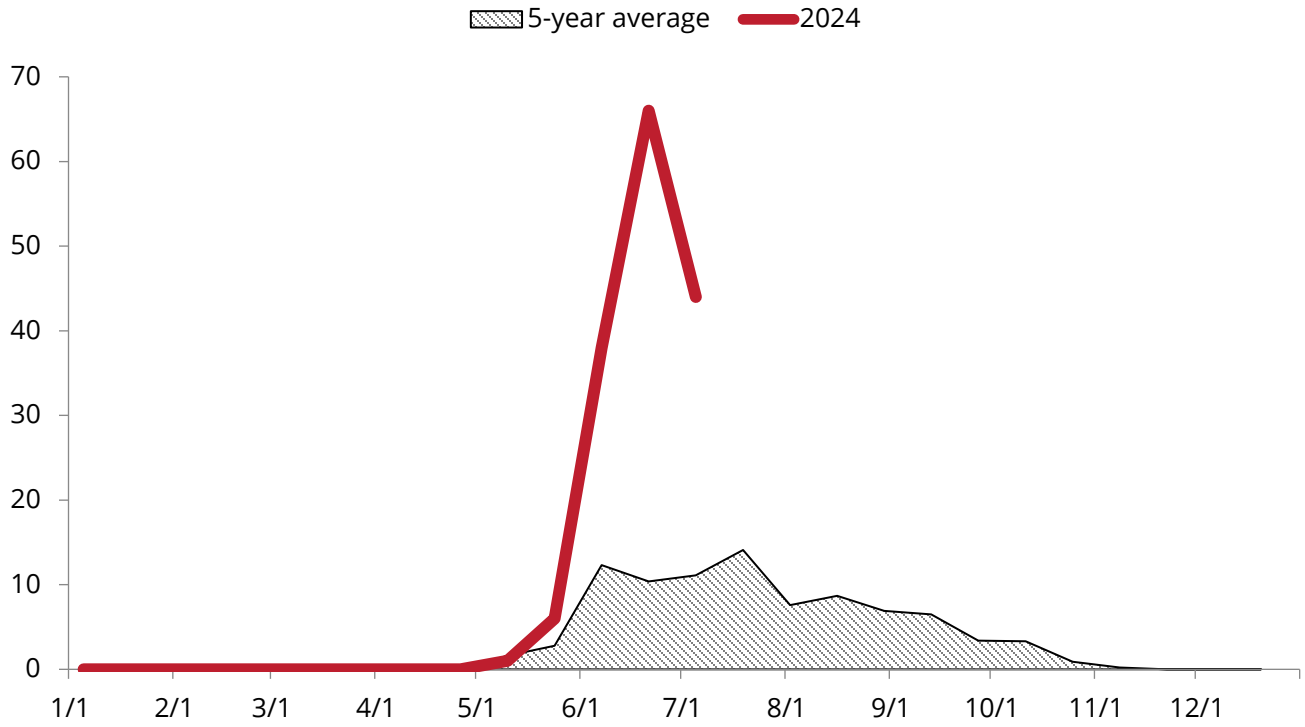


St. Louis Encephalitis Virus Risk Assessment

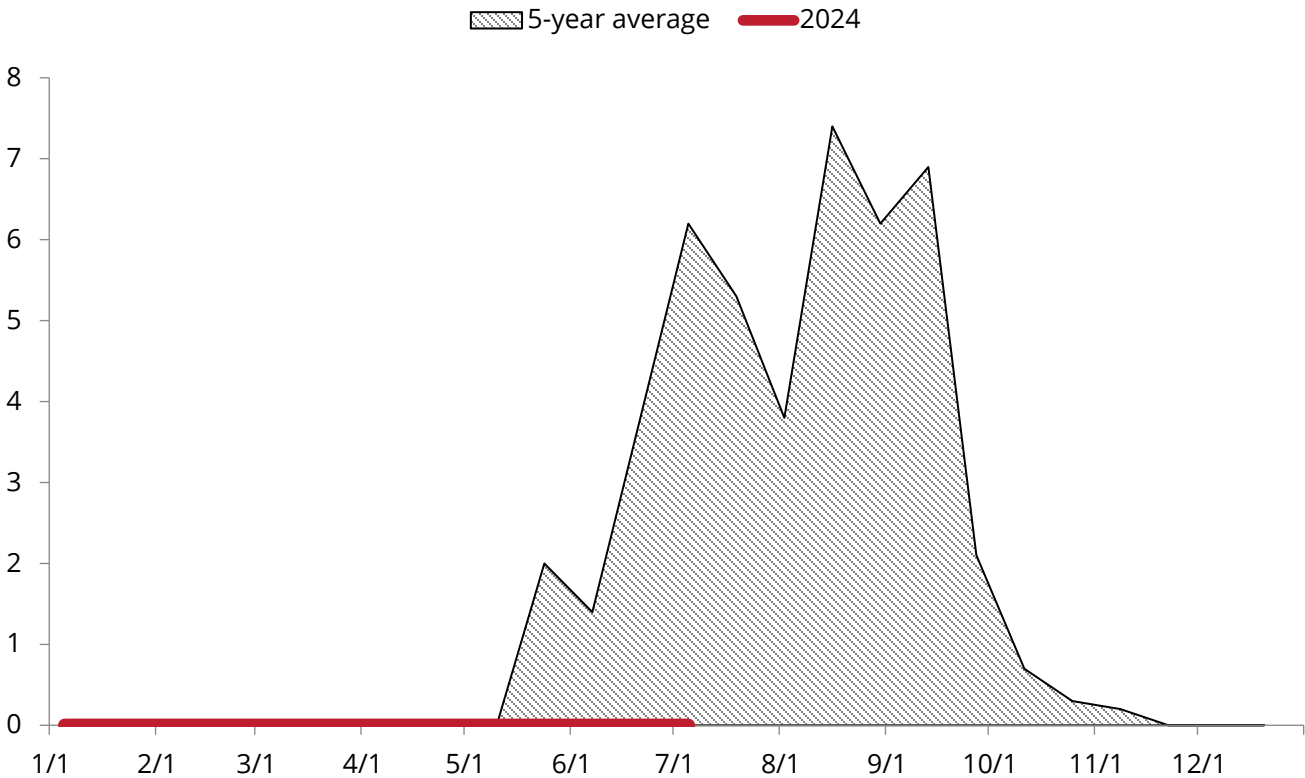


Risk Assessments courtesy of VectorSurv.org. Mosquito abundance, environmental factors (temperature and rainfall), number of infected mosquito samples, number of dead birds, and number of human cases are scored and averaged by region.

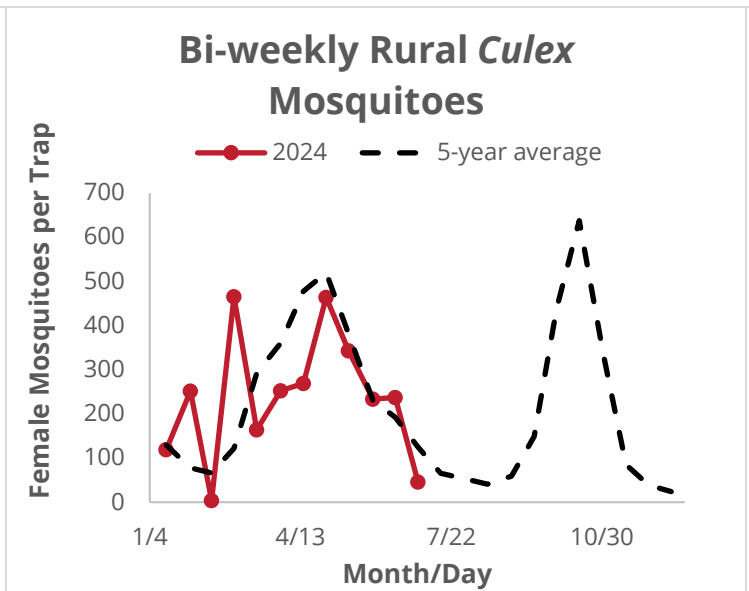
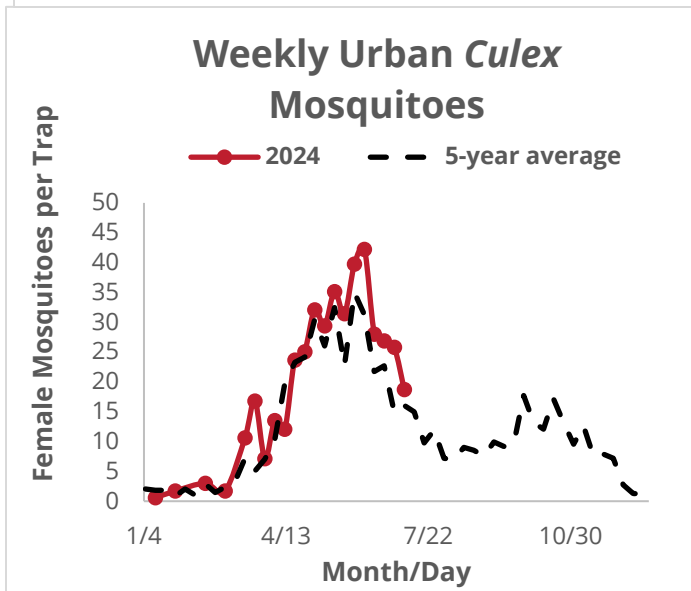
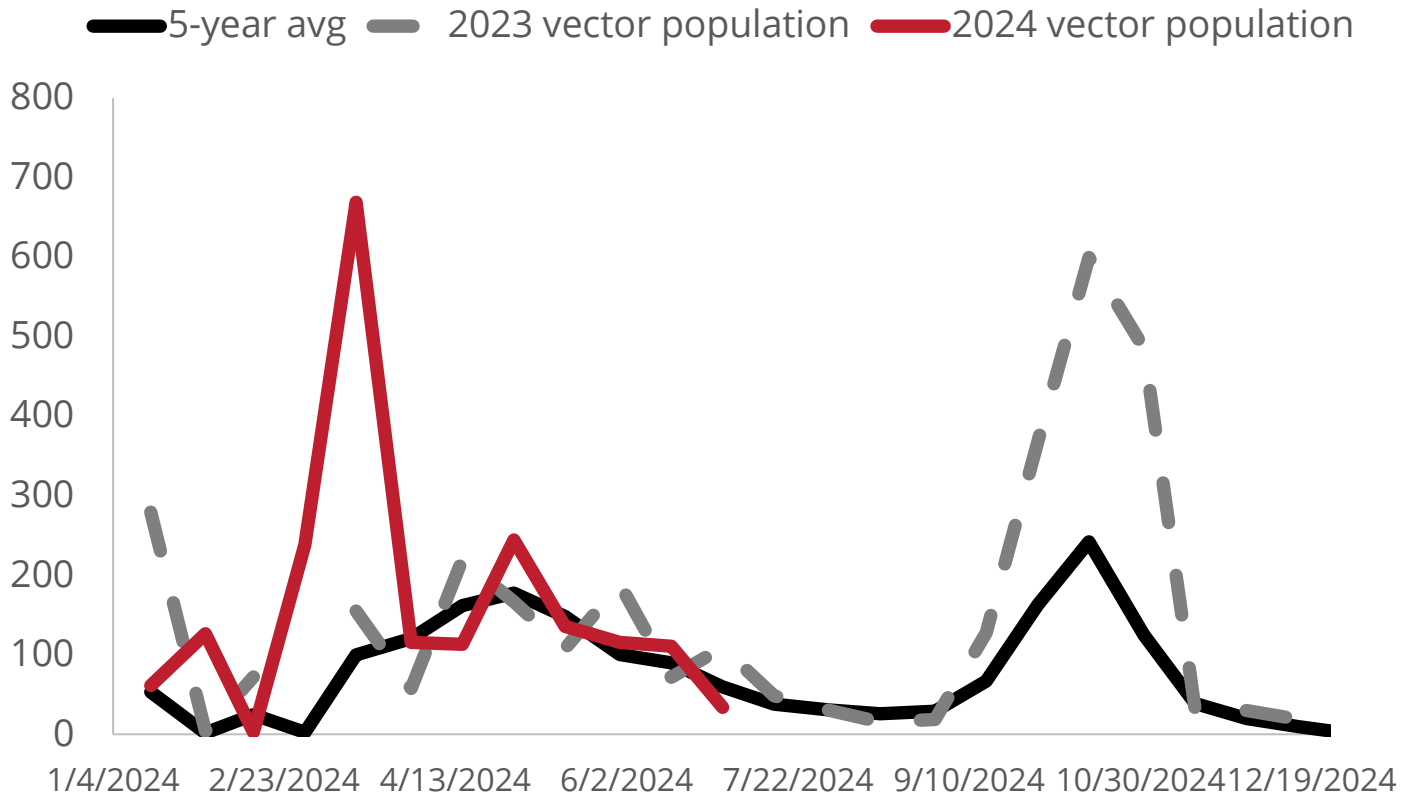
West Nile virus mosquito samples



St. Louis Encephalitis virus samples

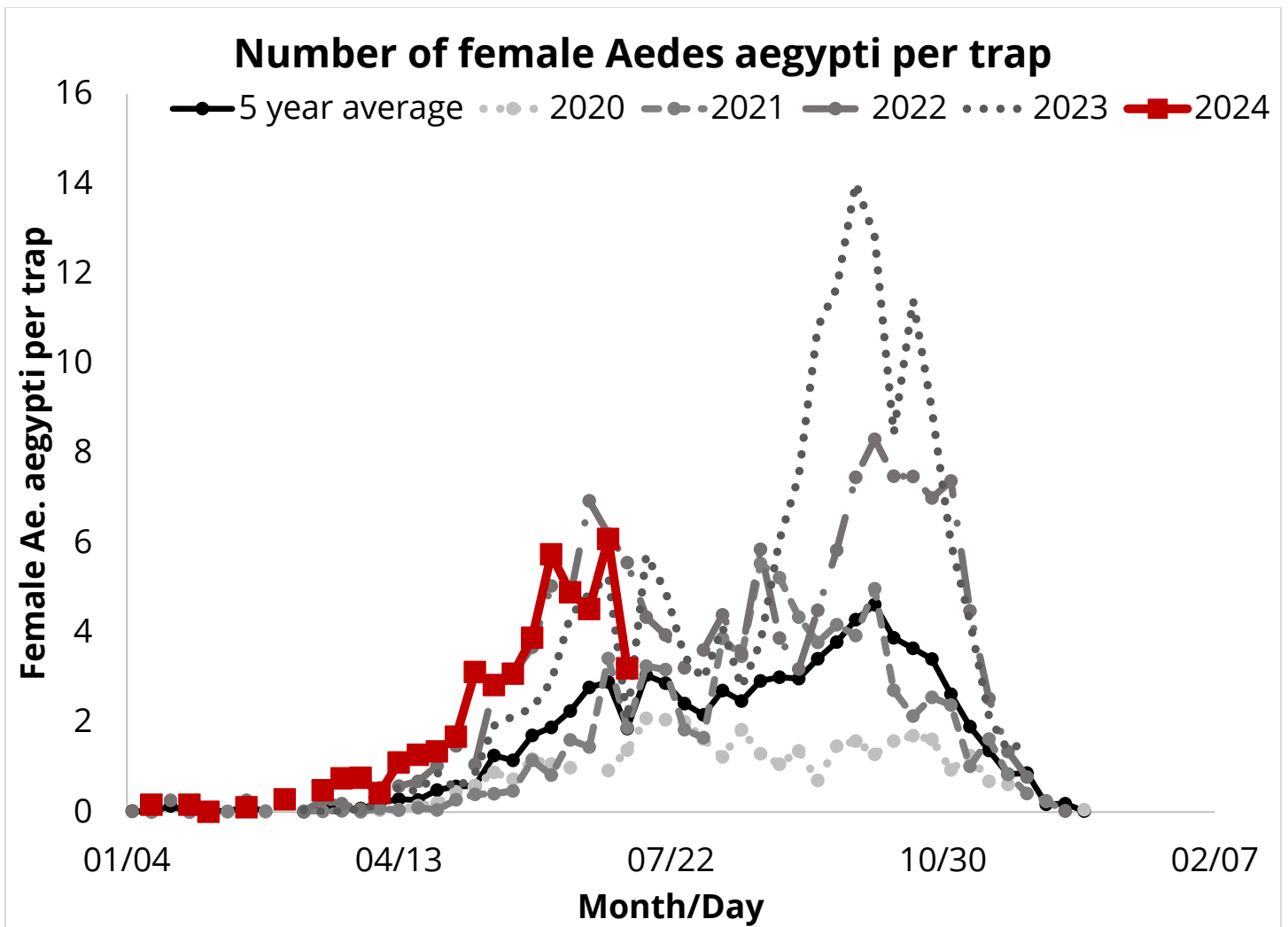


Culex mosquitoes 2024



Abundance of CO₂ and gravid traps for female *Culex* mosquitoes (vectors of WNV and SLEV). District-wide numbers are lower than the 5-year average for the second half of June (34 mosquitoes per trap). Rural mosquito traps are a well below the 5-year average for the second half of June (46 mosquitoes per trap). Urban traps are about the same as the 5-year average (19 mosquitoes per trap; excludes Bubbling Wells).

*District-wide and rural are on 1/2 month; Urban are weekly comparisons



Five-year average includes 2019-2023. 2019 and 2020 included increased detections including new cities and communities.

This week's average was approximately 3 mosquitoes per trap; last year's was approximately 2 mosquitoes per trap.